

Aquaporins: Restoring Osmotic Stability in Saline Aquaculture

Marine and brackish-water organisms operate under continuous osmotic stress. Because seawater is significantly saltier than intracellular fluids, water is perpetually drawn out of cells by osmosis, placing sustained physiological demands on gill epithelia, intestinal linings, and renal tissues. To manage this constant challenge, aquatic organisms rely on highly specialized membrane channels known as **aquaporins**.

Aquaporins are specialized membrane proteins that regulate the rapid and selective movement of water — and in some cases small neutral molecules such as glycerol, urea, and ammonia — across cellular membranes. Aquaporin efficiency depends not only on biological regulation — gene expression, hormonal signaling, and membrane composition — but critically on the **physical structure and clustering behavior of water** at cellular interfaces.

Their defining structural feature is a narrow, single-file pore — a geometrically constrained channel through which water molecules must pass individually, in sequence, like beads on a string. This architecture is not incidental; it is the structural basis of their extraordinary selectivity and efficiency. This distinction is often overlooked in aquaculture science, yet it has profound implications for system optimization.

Why Single-File Matters

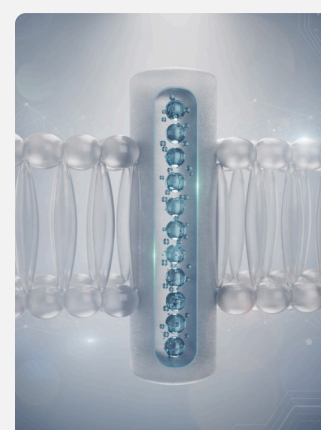
Single-file selectivity delivers three critical physiological outcomes: **controlled water flux** that responds to osmotic gradients, **complete ion exclusion** that prevents salt influx during water uptake, and **precise osmotic regulation** that protects cell volume under variable salinity conditions.

What Passes Through

- Individual water molecules
- Very small, dynamically exchanging water clusters

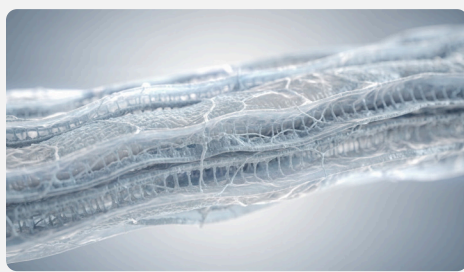
What Is Excluded

- Ions (Na^+ , Cl^- , K^+)
- Large, rigid molecular water clusters
- Protons (via the "proton exclusion" mechanism)



This mechanism is conserved and widely expressed across marine taxa — from gill epithelial cells in teleost fish to the hepatopancreas of shrimp, the mantle tissues of bivalves, and the intracellular membranes of marine plankton and microalgae.

Marine Fish



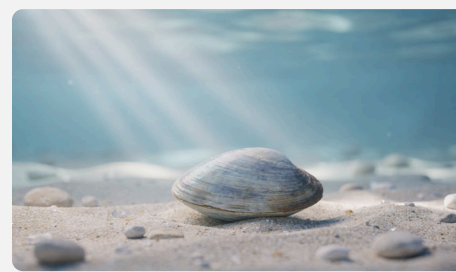
Gill epithelial cells, intestinal mucosa, and kidney tubules express aquaporins essential for seawater acclimation.

Crustaceans



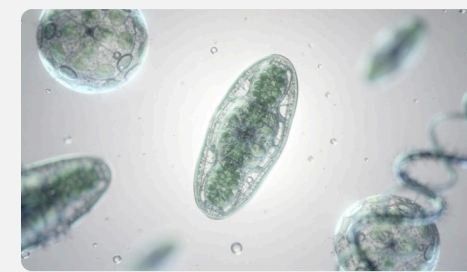
Shrimp, prawns, and crabs rely on aquaporins in gills, hepatopancreas, and intestinal epithelium for ionic balance.

Mollusks & Bivalves



Gill and mantle tissues use aquaporins to manage water flux across highly permeable epithelial surfaces

Plankton & Algae



Intracellular membranes of phytoplankton and microalgae use aquaporins to regulate turgor and osmotic balance.

Aquaporin-mediated transport is therefore not a peripheral aspect of marine physiology — **it is foundational**. These channels sustain cellular hydration, preserve gill membrane integrity, maintain oxygen diffusion capacity, and support metabolic stability.

Functional Consequences: Supported vs. Impaired Aquaporin Activity

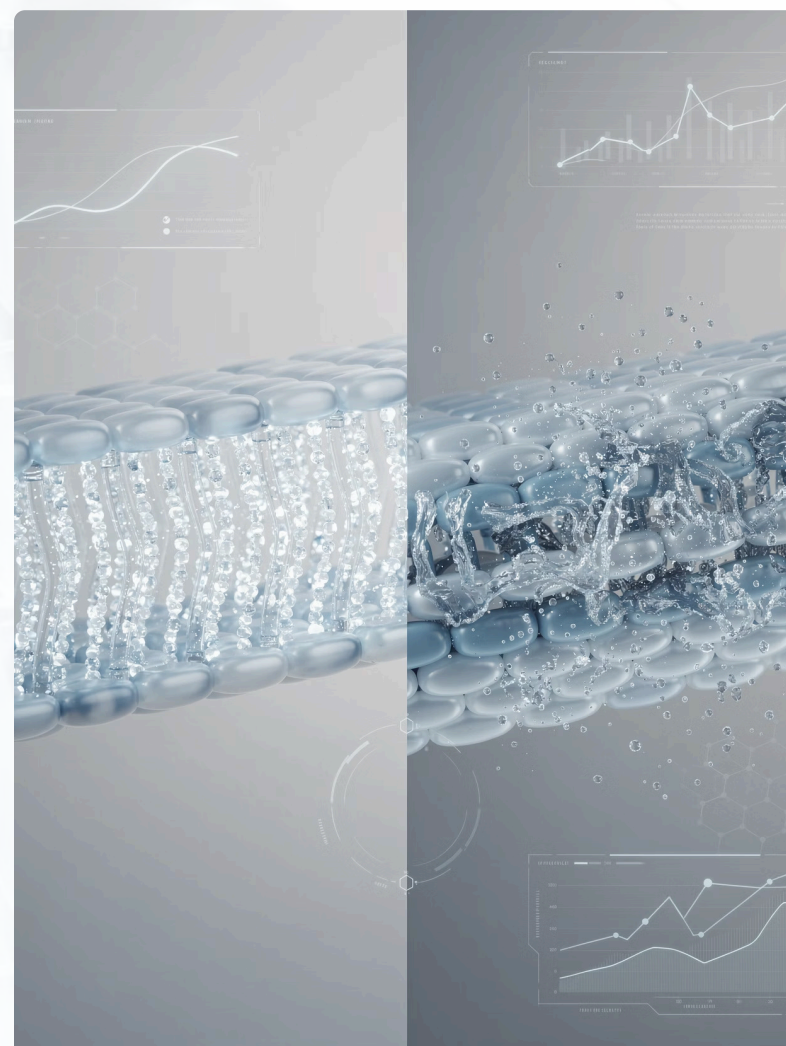
The efficiency of aquaporin-mediated transport produces measurable effects at cellular, tissue, and whole-organism levels. When hydration dynamics are structurally compatible with single-file channel transport, physiological performance is enhanced. When interfacial water organization becomes less compatible with aquaporin channel geometry, energetic demand increases and biological efficiency declines.

✓ When Aquaporin Function Is Supported

- Gill membranes remain thin, hydrated, and gas-permeable
- Oxygen diffusion efficiency improves across respiratory surfaces
- Cells maintain volume with lower ATP expenditure
- System-wide osmoregulatory burden decreases
- Growth and immune function are prioritized over stress response

✗ When Hydration Dynamics Are Impaired

- Larger or more rigid water clusters accumulate near membrane interfaces
- Resistance to single-file passage increases
- Cellular dehydration risk rises under sustained osmotic load
- Energetic cost of osmoregulation increases
- Growth performance and immune resilience are reduced



☐ Because biological performance depends on efficient single-file transport, the need for technologies that refine water's physical organization —without altering its chemistry—is critical; **Magnetic Water Treatment (MWT)** provides a proven solution aligned with this objective.

Structural Optimization of Water Through MWT for Membrane Transport

MWT acts at the level of water structuring to enhance compatibility between molecular organization and aquaporin membrane channel geometry. When water flows through a controlled magnetic field, subtle shifts occur in intermolecular interactions, promoting greater flexibility within the hydrogen-bond network.

Water Clustering Behavior

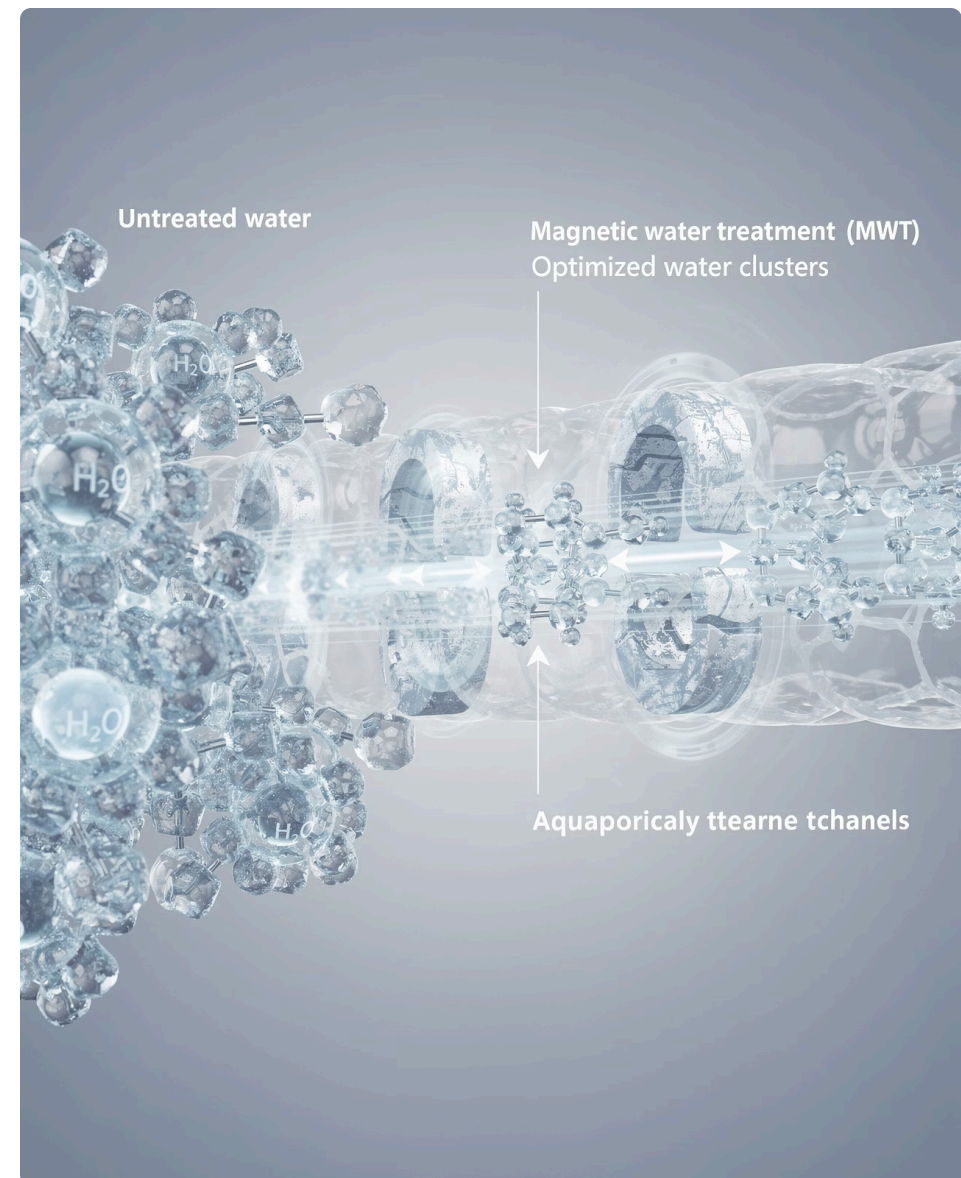
- Reduces average molecular cluster size by modulating hydrogen-bond network dynamics
- Favors smaller, more transient assemblies over large, rigid structures

Ion Hydration Shell Flexibility

- Enhances flexibility of ion–water hydration shells under magnetic exposure
- Lowers energetic cost of water exchange at membrane interfaces
- Improves local molecular mobility

Micro-Scale Fluid Mobility

- Promotes smaller, dynamically exchanging molecular groupings
- Maintains water in configurations compatible with rapid, low-resistance single-file transport through aquaporin channels

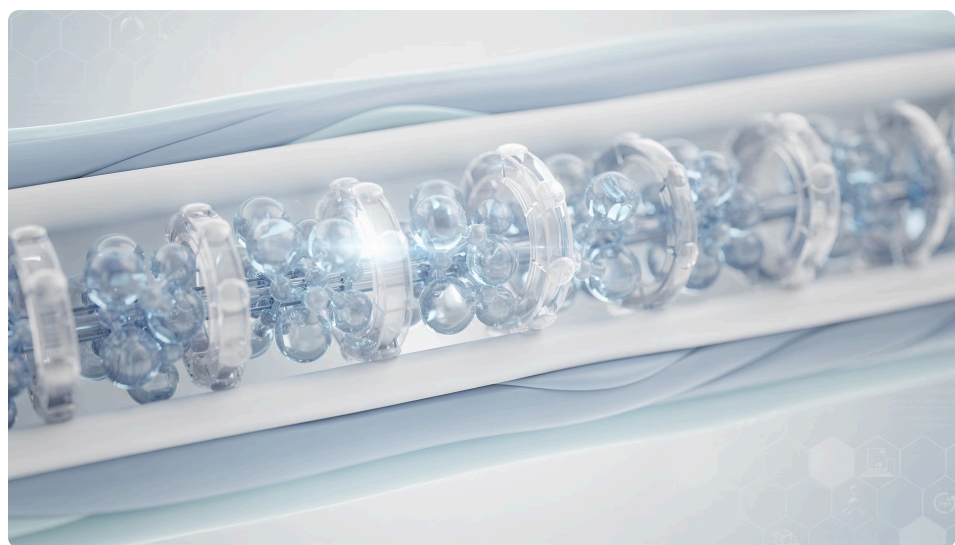


Important Boundary Condition: MWT operates exclusively at the level of water physics. It does **not** alter salinity, ionic composition, water chemistry, gene expression, or any biological signaling pathway. Its proposed mechanism is purely structural — optimizing the physical form of water to be more compatible with existing biological machinery.

Functional Benefits of MWT-Enhanced Water Compatibility

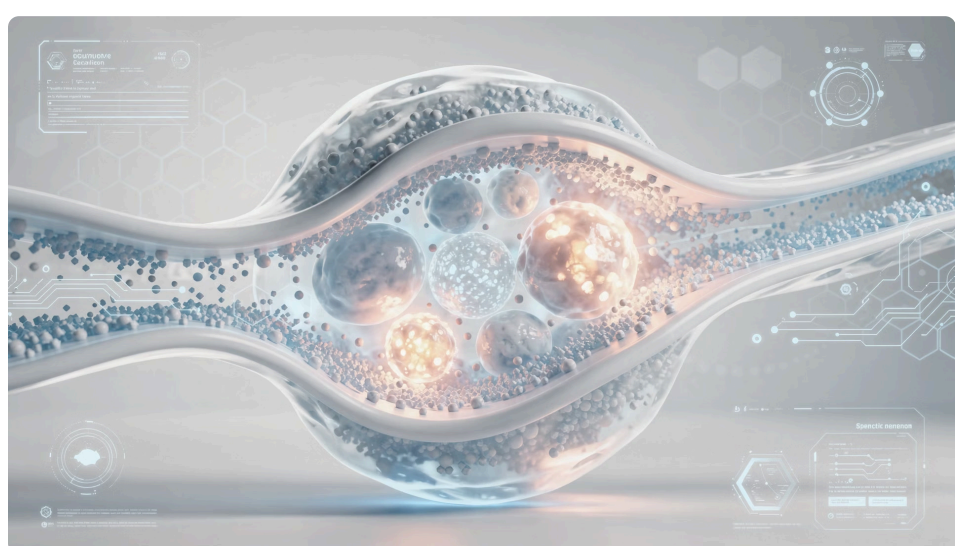
By improving structural compatibility between water molecules and the physical requirements of aquaporin channels, MWT produces a cascade of physiological improvements — each traceable back to the same root mechanism: reduced resistance to single-file water transport.

Smoother Water Flux



Smaller, more dynamic water clusters pass through aquaporin pores with reduced frictional resistance, supporting higher throughput at lower energetic cost.

Cellular Volume Stability



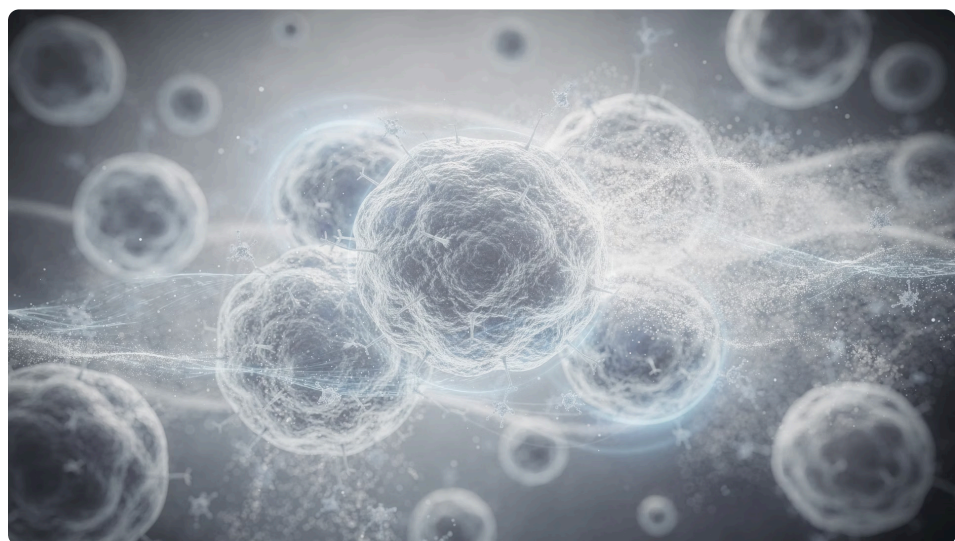
Efficient aquaporin flux helps cells maintain osmotic equilibrium, reducing swelling/shrinkage cycles that impair protein function and membrane integrity.

Consistent Growth Performance



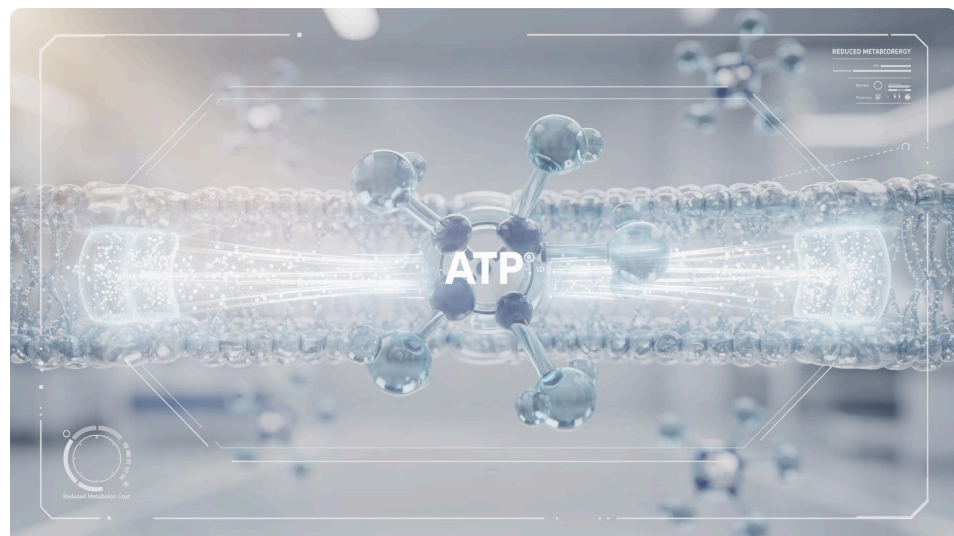
Stable cellular hydration and reduced physiological stress promote predictable biomass gain across production cycles.

Physiological Resilience



Organisms maintaining stronger osmoregulatory homeostasis demonstrate improved immune competence and tolerance to environmental fluctuations.

Lower Osmoregulatory Cost



Reduced membrane resistance translates directly into lower ATP expenditure per unit of water transported — a significant metabolic advantage under chronic osmotic stress.

Enhanced Oxygen Diffusion



Well-hydrated, structurally sound gill membranes support more efficient O₂ and CO₂ exchange — a direct benefit of sustained aquaporin activity in respiratory tissues.

Improved Survival Under Salinity Stress



Enhanced aquaporin efficiency during osmotic challenge reduces acute mortality risk in high-salinity and high-TDS environments.

These effects carry heightened relevance in **high-salinity systems**, **high-TDS conditions**, and **turbid or organically loaded aquaculture ponds** — precisely the environments where osmotic stress is most persistent and where marginal improvements in transport efficiency yield the greatest biological returns.